



# Welcome to SSIS Senior School



SHANGHAI SINGAPORE  
INTERNATIONAL SCHOOL  
上海新加坡外籍人员子女学校



- 1 **Welcome**
- 2 **Our Philosophy**
- 3 **Our Desired outcomes of SSIS Education**
- 4 **Curriculum, Assessment and the Learning Environment**
  - Our Unique World-Class Curriculum Pathway
  - Why choose us?
- 6 **Senior School Curriculum Framework**
  - Assessment
  - Homework
- 10 **Grades 7 & 8:**  
Based on the Lower Secondary Programme
- 12 **Grades 9 & 10:**  
Cambridge International General Certificate of Secondary Education (IGCSE)
- 14 **Grades 11 & 12:**  
International Baccalaureate Diploma Programme (IBDP)
- 18 **Pathway to Success**
- 24 **The SSIS College Readiness Journey**
- 28 **Hear from our Parents and Alumni**

## WELCOME TO SSIS SENIOR SCHOOL

Since 1996, we have been dedicated to providing exceptional educational outcomes to families in Shanghai.

At SSIS, our aim is to nurture future global leaders who can apply their knowledge and become the problem solvers of tomorrow. Our curriculum is carefully crafted to deliver the best of East & West. Our curriculum also instills in our students a deep knowledge and appreciation of our host country's culture and traditions.

While academic excellence is at the core of our mission, we are passionately committed to holistic education. We believe in developing students of good character by fostering a love of learning, exhibiting daily acts of kindness and compassion that build a love for humanity and demonstrating the strength of character in their decision-making. We want our graduates to be knowledgeable, compassionate and resilient so they are prepared for the challenges of tomorrow.

In line with our commitment to staying at the forefront of education, we embrace innovation and technology. Our students engage in various creative endeavours, such as planning, designing, acting, producing, directing, and editing. Our talented musicians not only perform at a high standard but also compose their own works. Additionally, the exceptional quality of artwork produced across the Senior School is evident. Sports and activities also play a key role in developing teamwork, resilience, well-being and leadership. We take great pride in our students' achievements, as they consistently represent our school in local and international sporting events, achieving remarkable results.

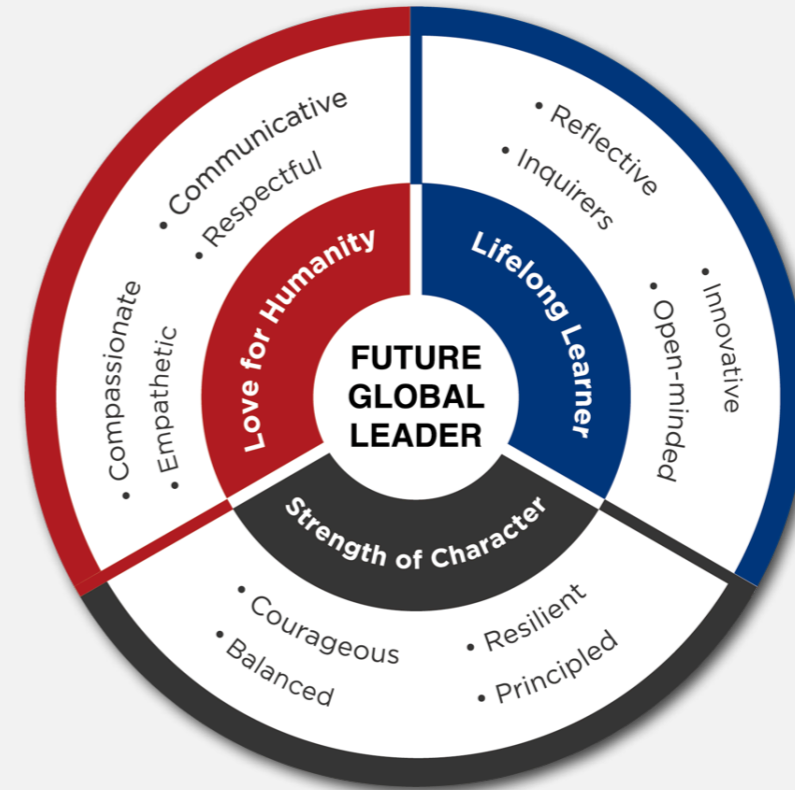
Great schools are a result of great teachers expertly delivering an excellent curriculum. Visit us and see our world-class facilities. Most importantly, come and meet our outstanding students and inspiring teachers, who are the heart and soul of our community.

# OUR PHILOSOPHY

SSIS believes in the holistic development of a resourceful, confident and independent learner within a caring and nurturing environment to become a global citizen.



# OUR DESIRED OUTCOMES OF SSIS EDUCATION



## Our Desired outcomes of SSIS Education

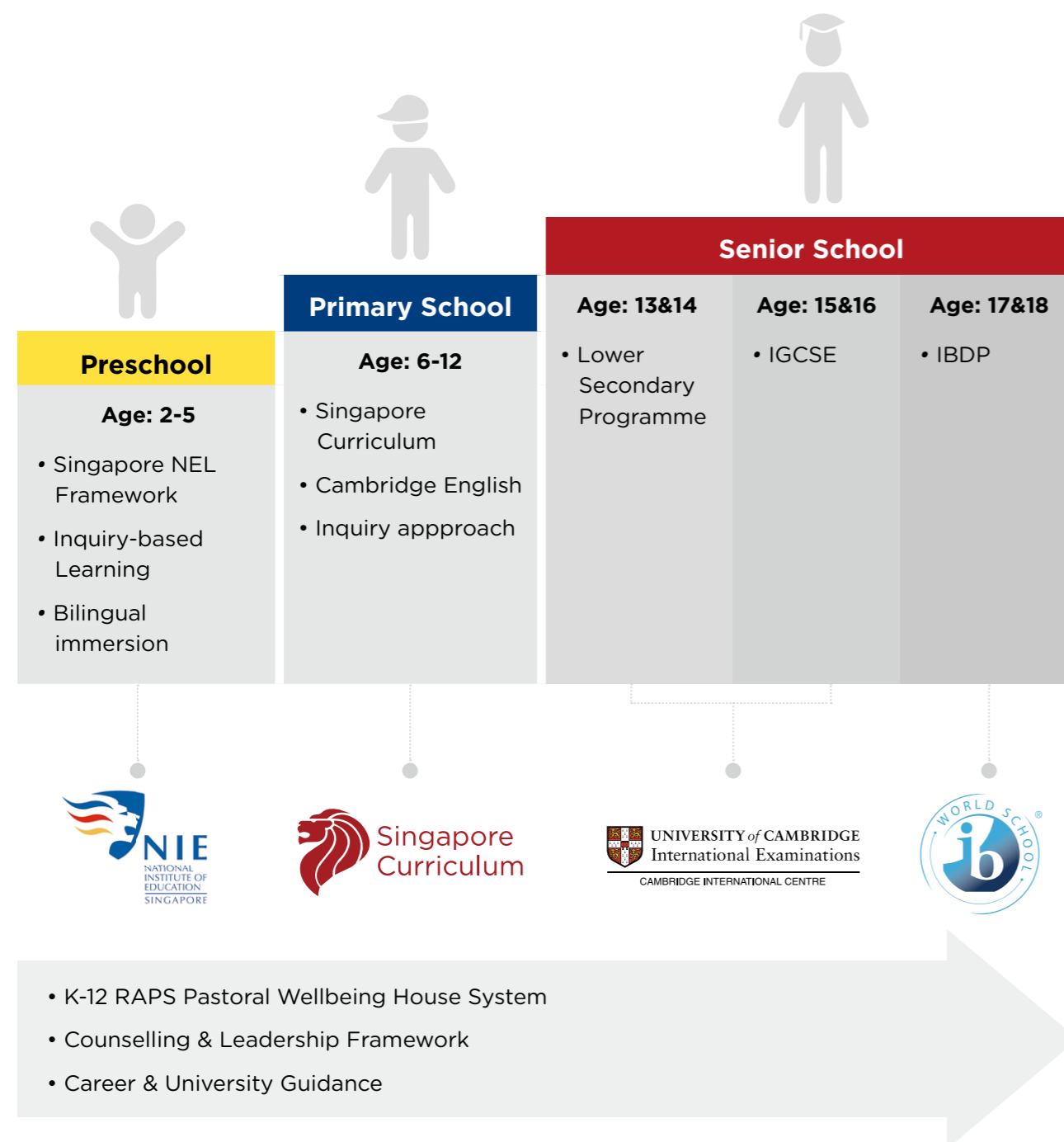
At SSIS, we envisage the desired outcomes of the Early Years to Grade 12 SSIS education to be the fruition of a future global leader - one who is engaged in lifelong learning, shows strength of character as well as a love for humanity. We believe it is our responsibility to develop in our students these necessary character traits and qualities. Their personal and social growth and development is also crucial as they understand their responsibility in society and eventually become global leaders.

## Four Pillars of Excellence



# CURRICULUM, ASSESSMENT AND THE LEARNING ENVIRONMENT

## Our Unique World-Class Curriculum Pathway



## Why choose us?



Rigorous and Balanced Academic Pathway (CLSP-IGCSE-IB)



Small Class Sizes & a Supportive Environment



Expert and Passionate Teachers



State-of-the-Art Facilities



Bi-weekly Counselling & Career Guidance Lessons



Academic Mentoring & Support

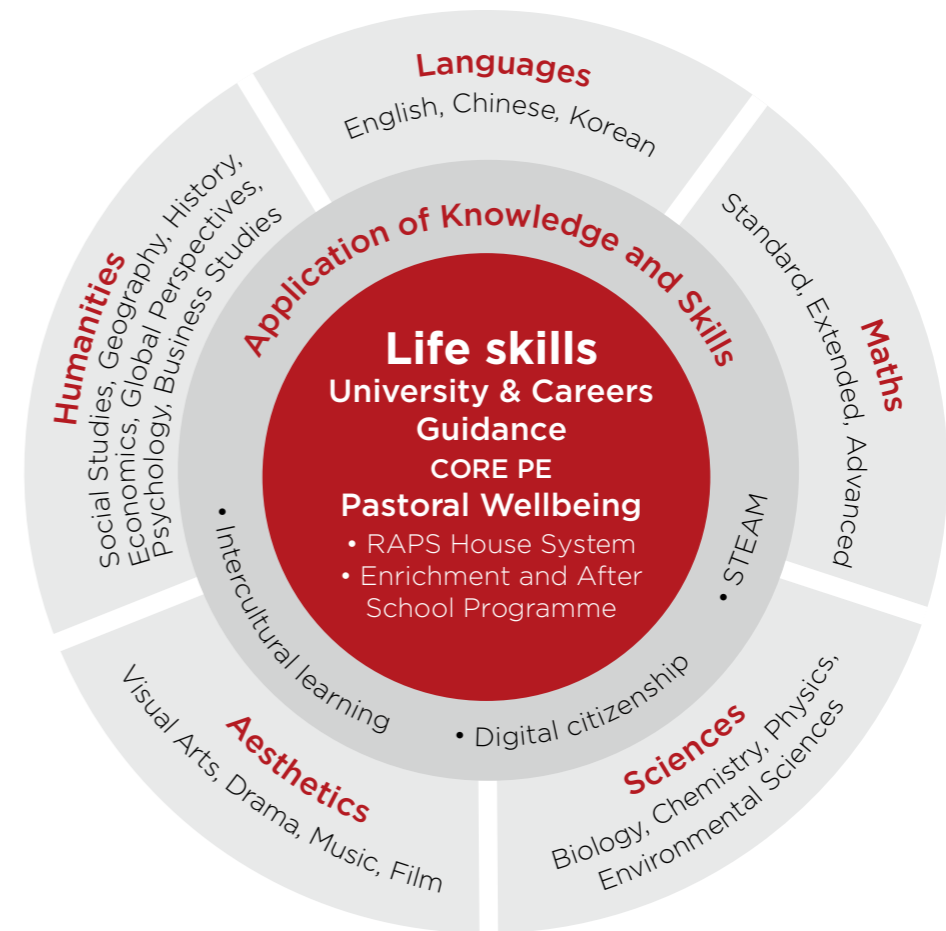


Extensive Enrichment & After School Programmes



Focus on Leadership & Student Agency

# SENIOR SCHOOL CURRICULUM FRAMEWORK



Schools should offer children the necessary tools and opportunities to actively participate, make informed choices, develop understanding, cultivate independent thinking, explore various subjects, evaluate their values, and find purpose in their lives. At SSIS, our primary focus is on securing the best possible outcomes for our students, which includes academic success in external examinations. However, we also emphasise the development of intercultural understanding, the ability to lead happy and fulfilled lives, and the cultivation of active and purposeful roles in a global society.

Our curriculum at SSIS identifies the essential knowledge and skills that students are expected to acquire. It also provides transformative experiences that enable them to grow and succeed in their lives.

The structure of our Senior School curriculum is divided into **three distinct phases**, guiding students from the foundational opportunities in Grades 7-8, through subject choices in Grades 9-10, to increased specialisation in Grades 11-12.

Our curriculum is underpinned by **three core values**:

- 1. We believe in the power of knowledge.** Therefore, we prioritize providing all students, regardless of their background or ability, with access to the "best that has been thought or said."
- 2. We believe that language unlocks the world.** Consequently, we prioritise regular opportunities for extended reading, writing, oracy, and vocabulary development for all students.
- 3. We believe in fostering intercultural understanding.** Through our curriculum, students learn habits of kindness, equality, self-regulation, and the acceptance of personal and collective responsibility.

By upholding these core values, SSIS aims to provide an enriching educational experience that prepares students to thrive academically, socially, and culturally in an interconnected world.

### Assessment

SSIS Senior School has a comprehensive assessment system to document students' growth in learning, give students timely feedback and to guide and inform programming and instruction needs.

There are two types of assessment:

- Formative/Responsive Teaching – is ongoing in every lesson and tells students (and their teachers) how to improve.
- Summative – tells students (and their teachers) what their current level of understanding is.

	Where the learner is going	Where the learner is now	How to get the learner there
Teacher	Clarifying, sharing, and understanding learning intentions	Eliciting evidence of learning	Providing feedback that moves learners forward
Peer		Activating students as learning resources for one another	
Student		Activating students as owners of their own learning	

(William & Thompson, 2007)

### Homework

Meaningful homework is an integral part of learning as it consolidates knowledge and deepens understanding. It also has metacognition and self-regulation-benefits of improved self-discipline, sense of responsibility and time management. Students may also improve their attitude toward school and develop independent problem-solving skills.

Homework will regularly be assigned in all subjects. Most homework assignments will be linked to classroom learning and used to consolidate knowledge, practice skills and develop fluency in a particular area. Students are provided high quality feedback on their homework.

Core subjects will set homework a minimum of twice a week and the recommended time spent on homework per evening is:

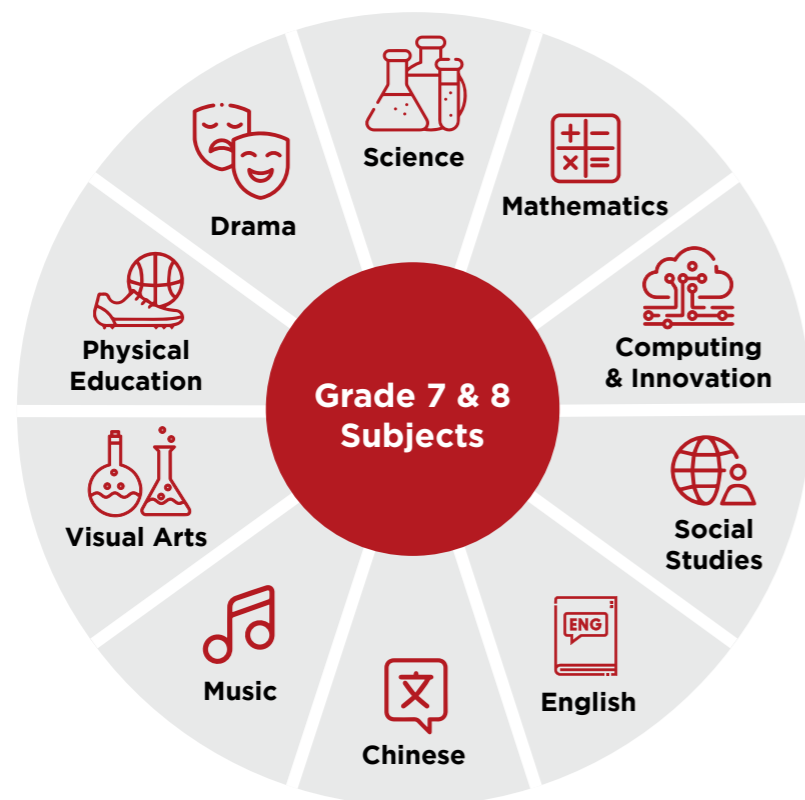
- G7-8 up to 2 hours.
- G9-10 up to 2-3 hours.
- G11-12 up to 4 hours.



## GRADES 7 & 8: BASED ON THE LOWER SECONDARY PROGRAMME

The curriculum in Grades 7-8 at SSIS serves as a bridge between the Singaporean curriculum in primary school and the internationally recognised Cambridge International General Certificate of Secondary Education (IGCSE) in Grades 9-10. To prepare students for the IGCSE programme, the curriculum has been adapted from the Secondary 1 & 2 Singaporean curricula and the Cambridge Secondary 1 Checkpoint frameworks. This adaptation ensures a smooth transition and alignment with the local Shanghai context while meeting the needs of our international students and staff.

During Grades 7-8, students study a well-rounded range of subjects that provide a solid foundation.

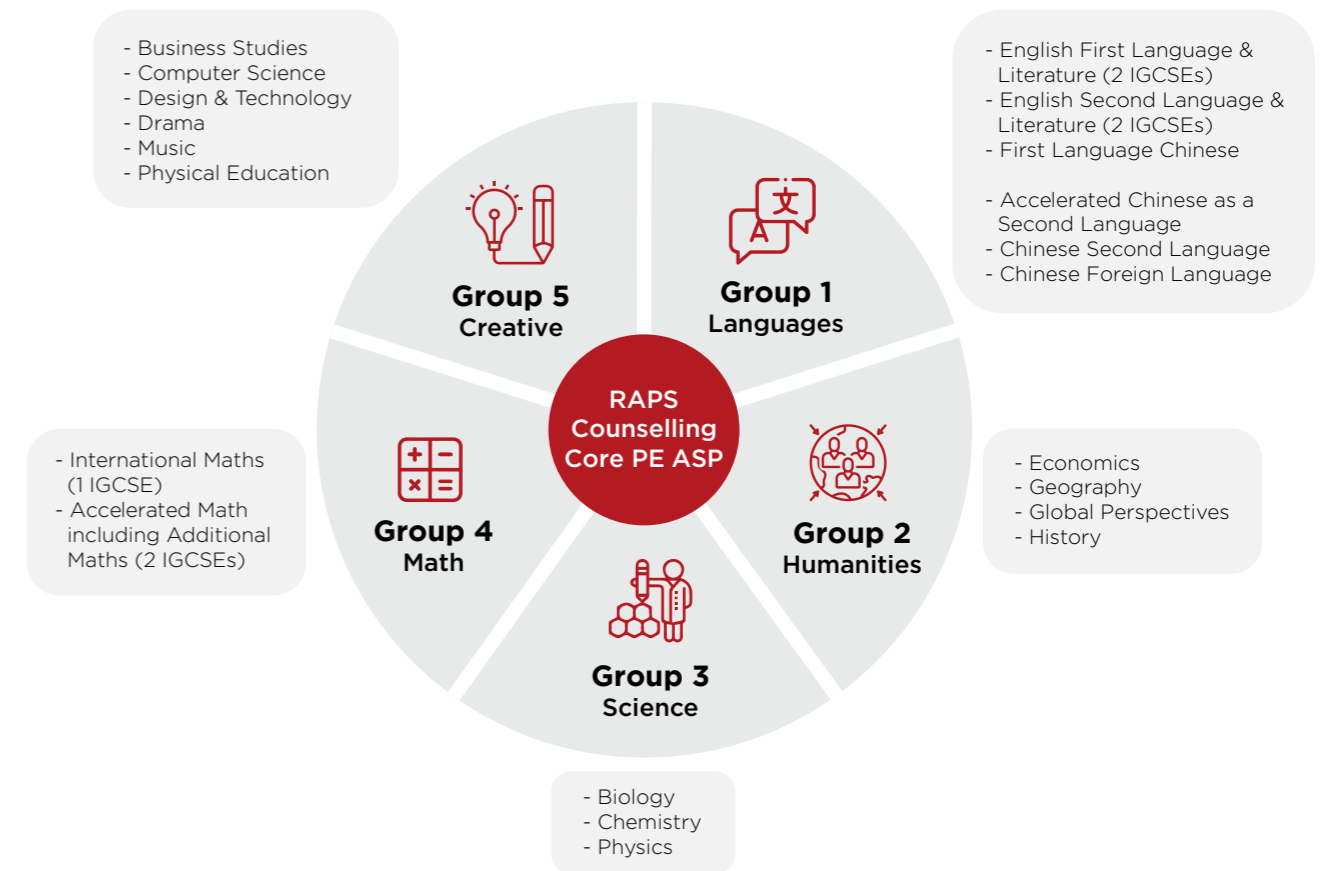


- It consists of a common core of: English, Mathematics, Science, Chinese Language, Social Studies, Art & Visual Design, Performing Arts, Computing and Physical Education.
- Students are assigned to English and Chinese classes based on their English language ability.
- Maths classes are banded to offer more support and extension.

Students also experience a **weekly enrichment lesson** which include rotations of cooking skills, experiential learning and buddy visits to our preschool classrooms. All students also plan and implement a Sabres Service and Community project. Students will demonstrate their learning at the “My Community Project and Enrichment Journey” showcase in May each year.



# GRADES 9 & 10: CAMBRIDGE INTERNATIONAL GENERAL CERTIFICATE OF SECONDARY EDUCATION (IGCSE)



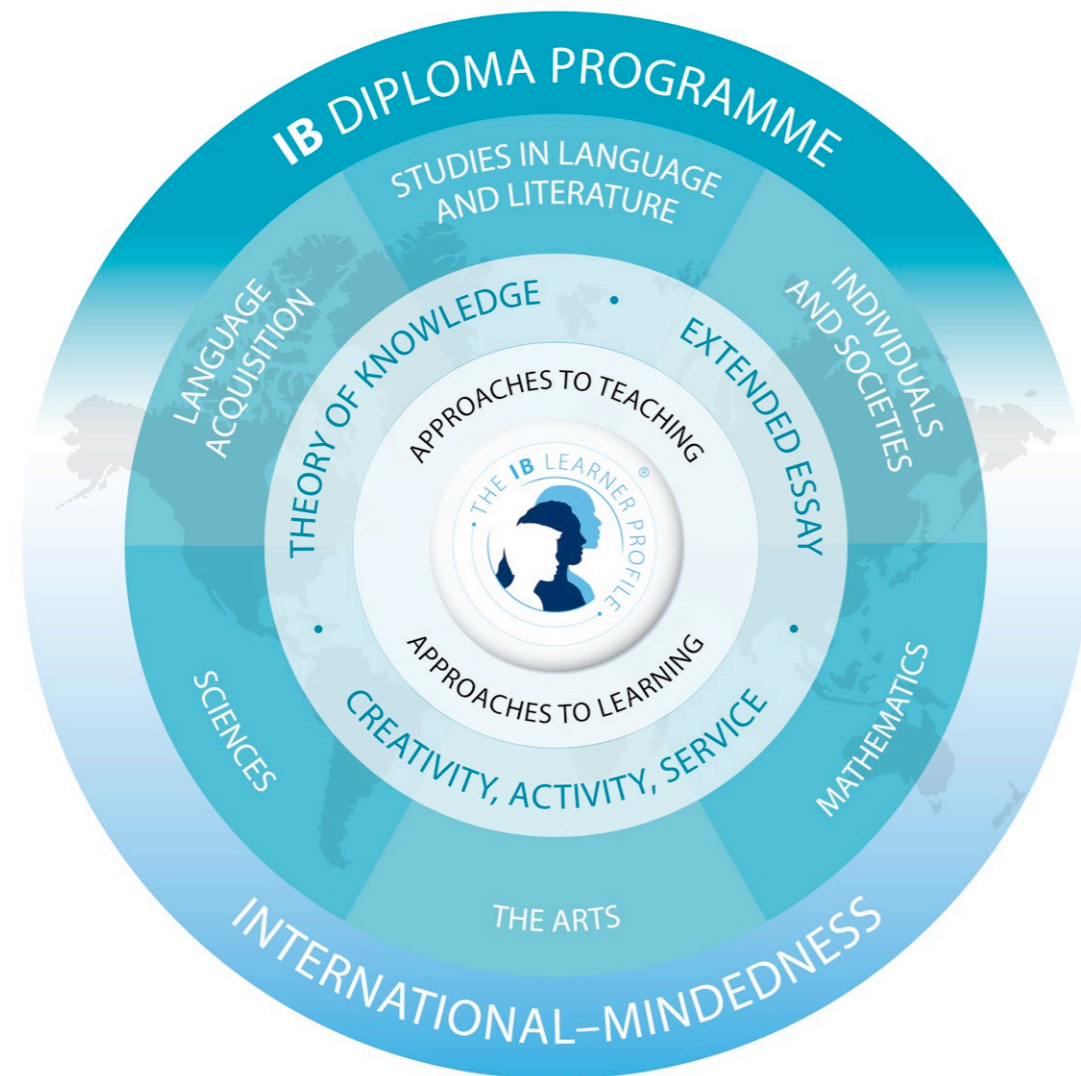
The IGCSE curriculum at SSIS consists of **five compulsory core courses**: English, Chinese, Mathematics, Science, and Humanities. Additionally, students have the option to choose up to five elective IGCSE subjects. This wide range of compulsory and optional subjects has been carefully designed to provide students with a well-rounded education that effectively prepares them for the International Baccalaureate Diploma Programme (IBDP).

At SSIS, students have the flexibility to study between **7-10 IGCSE subjects**, covering various areas of the curriculum. In some cases, a selected number of students may be recommended to study 7 IGCSEs, with their timetable incorporating English Language and Academic Support.







For our highly skilled mathematicians, we recommend choosing Accelerated International Mathematics and Additional Mathematics, enabling them to study up to ten IGCSEs.

By offering a diverse selection of IGCSE subjects and providing support tailored to individual needs, SSIS ensures that each student receives a comprehensive education, setting them on the path to success in the IGCSE exams and beyond.

# GRADES 11 & 12: INTERNATIONAL BACCALAUREATE DIPLOMA PROGRAMME (IBDP)



## Cohort 2025 Course Selections

	<b>Group 1:</b> Studies in Language and Literature	English A - Language & Literature Chinese A - Language & Literature Korean A - Language & Literature
	<b>Group 2:</b> Language Acquisition	English B Chinese B Mandarin ab initio* (beginner) • <i>Group 2 may be replaced with a second class from Group 1</i> Korean Language & Literature
	<b>Group 3:</b> Individuals and Societies	Business Management Economics History Psychology geography Environmental Systems and Societies (ESS)* <i>can be classified as Group 4</i>
	<b>Group 4:</b> Experimental Sciences	Biology Physics Chemistry Computer Science Environmental Systems and Societies (ESS)* <i>can be classified as Group 3</i>
	<b>Group 5:</b> Mathematics	Math with Interpretations Math with Analysis
	<b>Group 6:</b> The Arts	Visual Art Music Film • <i>Group 6 may be replaced with a second class from Group 3 or Group 4</i>

The IBDP is a challenging two-year pre-university curriculum, primarily aimed at students aged 16 – 19. It leads to a qualification (the IB Diploma) that is widely recognised as the “gold standard” by the world’s leading universities.

A distinguishing characteristic of the IBDP is a focus with the whole educational experience of each student. The curriculum framework, and the supporting structures and principles, are designed to ensure that each student is necessarily exposed to a broad and balanced curriculum.

**100% of our students undertake the IBDP. There is no selection process.**

Our students are all given **personal advice** about their choice of IB Diploma subjects. This advice is given in coordination with our IB Coordinator and our university counselors. Parents are involved fully in this process and information events are staged for parents and students.

Students in the IB Diploma Programme must study 6 subjects in total with at least 3 subjects at Higher Level (HL) and at least 2 at Standard Level (SL) selected from the six groups / electives offered.

In addition to the six subjects, candidates for the IB diploma must complete the DP core, which includes:

- **Theory of Knowledge (TOK)** is an interdisciplinary requirement intended to stimulate critical reflection on the knowledge and experience gained inside and outside the classroom. The course challenges students to question the bases of knowledge, to be aware of subjective and ideological biases, to develop the ability to analyse evidence that is expressed in rational argument.
- **Extended Essay (EE)**, an in-depth study of a limited topic within a subject which provides students the opportunity to investigate a topic of individual interest, and acquaints students with the independent research and writing skills expected at university.
- **Creativity, Activity and Service (CAS)**, which complements the academic disciplines of the IBDP curriculum, encourages students to be involved in artistic pursuits, sports and community service work, thus fostering students’ awareness and appreciation of life outside the academic arena.

We are proud that our IB graduates have consistently outperformed the world’s average and have received offers from top prestigious universities worldwide. This is a testament to the high-quality education that our students receive and the dedication of our teachers and staff in ensuring that our students are well-prepared for the challenges of higher education.



# PATHWAY TO SUCCESS

At SSIS, we believe in nurturing well-rounded students who excel not only academically but also holistically, embracing a diverse range of experiences and opportunities. Our focus extends beyond academic excellence to encompass leadership and character development, involvement in extracurricular activities, innovation and personal wellness.



Our holistic approach equips our students with the necessary skills, values, and experiences to succeed not just in universities but also in life. We are proud to support their growth as well-rounded individuals who possess the qualities needed to make a positive difference in an ever-changing world.

## RAPS House System

All students who join SSIS will be assigned to a House (Ruby, Amber, Pearl, Sapphire). Being a part of a House allows students to feel a sense of identity and belonging. It promotes student responsibility and gives students added leadership opportunities.

## Form Class

Our Senior School Form Class system allows tutors and students to build strong bonds with each other in a safe and supportive environment. Guidance and information are shared each morning with students so they can navigate the day with confidence.

## Biweekly Pastoral and Wellbeing Lessons

We prioritise the wellbeing and growth of our students in a supportive and nurturing environment. Social emotional lessons targeting young adolescents are delivered by Form Tutors.

## Mentor Program:

The teacher mentor is there to guide, support, and develop mentees by providing a safe space for reflection, feedback, open dialogue and skill-building, helping them navigate school life (academics and extra-curricular) and helping them build confidence as they grow into successful global citizens.

We aim to:

- Create a culture where: 'Every Child Matters' & 'Every Student is a Leader'.
- Promote: Global Citizenship & Service Learning.
- Provide opportunities to:
  - Develop spoken literacy in a range of scenarios.
  - Promote student voice.
  - Encourage student agency.

## After School Programme (ASP)

ASP plays a vital role in providing a well-rounded education and fostering the growth of our students. It offers an excellent platform for our students to nurture and showcase their talents and develop essential life skills, including self-confidence, responsibility, initiative, and commitment, extending beyond the traditional classroom setting. ASP takes place from 3:30 to 5:00 pm, Monday to Friday, presenting a wide range of activities that cater to various interests. The programmes vary from areas such as Academics, Sports, Aesthetics to Student-led Interest Clubs.

SSIS is proud to be a member of the following inter-scholastic associations:



## Leadership and Service Learning

At SSIS, we believe that every student has the potential to become a leader and make a positive impact to the world. We strive to make sure that every student grows socially and emotionally in a safe and caring environment. We provide a variety of opportunities for students to further develop and enhance the SSIS Learner Attributes.



## Global Citizenship, Community, Action & Service (CAS)

Service learning is an integral part of Senior school student life, with a focus on student-led engagement and community involvement. Students have the opportunity to participate in student-led awareness clubs and engage in various community involvement activities. Additionally, volunteering opportunities within the school are provided to foster a sense of social responsibility. In Grades 11 and 12, the compulsory CAS (Creativity, Activity, Service) component further enhances students' understanding of service and encourages active participation in meaningful projects that make a positive impact on the community.

## Experiential Learning & Excursions

SSIS believes that excursions give students an authentic learning experience outside of the classroom where they can make real-world connections to what is being learned inside the classroom. Each year, students will experience a different excursion during Autumn and Spring with clearly defined learning outcomes.

## Duke of Edinburgh International Award

The aim of the International Award Scheme is to help young people to plan and undertake their own programmes of activity, to develop mentally, physically and emotionally. Students must complete four areas of participation; expedition, skill, physical recreation and service. Throughout the award, our teachers work with students closely so that they become more motivated, disciplined and balanced; qualities that employers, colleges and universities truly value.



# THE SSIS COLLEGE READINESS JOURNEY

## A Comprehensive & Individualised Approach

At SSIS, we adopt a comprehensive approach to college readiness and university destinations. Our team of expert counsellors is dedicated to guiding students and parents through the process of preparing for life beyond SSIS. We offer both group and individual counselling, academic guidance, and career exploration services for students in grades 7-12.

While students are the primary drivers of their own success, we actively encourage parents to be involved in the process. We firmly believe that a collaborative approach involving students, parents, and the school is crucial for a successful college application process.

## Three levels of support

### Personal Guidance






- Advice on subject combination choices for IGCSE and IBDP
- Support with university choices and applications
- Tailored 1:1 drop-in sessions on academic roadmaps
- Personal statement review and feedback sessions
- Psychometric tests and career fit discussions
- Customised mock interviews

### Group / Interest-based

- University Information Sharing Sessions
- Workshop for prospective medicine, dentistry and veterinary applicants
- Seminars on university admission process worldwide

### Cohort and Schoolwide

- Comprehensive university guidance curriculum throughout Senior School
- Academic Options Meeting
- Annual World University Fair
- Alumni sharing and mentoring sessions
- Parent education workshops

 <b>How do I become a successful student?</b>	Upper Primary	Grade 5	1. Academic Skills Success 2. Career Exploration 3. Self-Regulation 4. Social Responsibility 5. Ethical Responsibility
		Grade 6	6. How to be Senior School Ready
 <b>How do I become gritty?</b>	Senior School Ready	<b>CLSP Programme</b>	
		Grade 7	1. Self-management 2. Goal setting 3. Effective Communications 4. Effective Study Habits 5. Stress Management
		Grade 8	6. Career Exploration 7. Social Responsibility 8. Leadership 9. IGCSE Subject Selection
 <b>Who You Are?</b>	High School Ready	<b>IGCSE Programme</b>	
		Grade 9	1. Science of Learning 2. Self-knowledge 3. Advice on Summer Internships and programmes 4. Positive Psychology
		Grade 10	5. Career Exploration 6. University Entry Requirements 7. IBDP Subject Selection
		<b>IB Programme</b>	
 <b>Where can I go?</b>		Grade 11	1. University Application Pathway 2. Informed Research on application 3. Draft of Personal Statements 4. Family and Counsellor meeting
		Grade 12	5. Finalisation of University List 6. Submission of Applications
 <b>How do I get there?</b>		<b>University Ready</b>	

## School Events

In the Senior school, our students' learning is extended beyond the classroom by active engagement in various school events, ranging from learning enrichment events such as Reading Extravaganza, Poetry Festival, STEAM Innovation Week, Science Fair to festive celebrations.



# HEAR FROM OUR PARENTS AND ALUMNI



TAN Chong Jia Marcus  
SSIS Alumnus, Class of 2008

"I am very grateful to have spent 12 consecutive years of my life in SSIS; not many have this kind of experience, especially in a foreign country. Having been shaped in part by the holistic, creative, yet rigorous environment at SSIS, I found myself able to communicate, innovate, and collaborate in ways that enabled me to build a successful business of my own. I have also made life-long friends among schoolmates and teachers, and that is one of the many things that I cherish the most."



Christine TAN  
SSIS Alumnus, Class of 2016

"SSIS and IB, in particular, prepared me well for university. It taught me to do self-directed research, prepare for exams, think conceptually and theoretically, to engage in the community and to explore different subjects. It bridged the gap between high school and university, making it much easier to transition."



Nidhi SHARMA  
Parent of Paarth SHARMA,  
Class of 2022

"Being an SSIS parent for ten years speaks plenty about the school. Its holistic expansion, in terms of infrastructure and integrated curriculum, has allowed my son to put in his best efforts. Additionally, it's providing multiple opportunities for students to explore their potential."





301 Zhu Jian Road, Minhang District  
Shanghai, China 201106  
86-21-62219288

[www.ssis.asia](http://www.ssis.asia)

